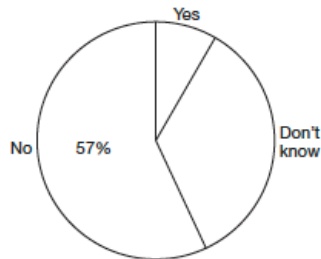


Resource sheet

Four problems: making the links

Six-term survey

This pie chart shows the results of a survey about changing the length and number of school terms. 158 responses were received.

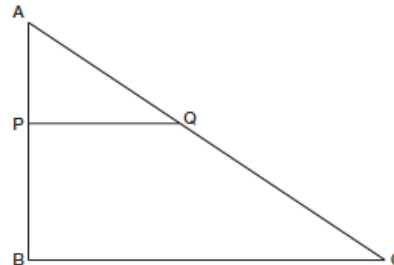


How many responses were 'No'?

55 responses were 'Don't know'. Calculate the percentage of 'Don't know' and 'Yes' responses.

Similar triangles

The triangles ABC and APQ are similar.



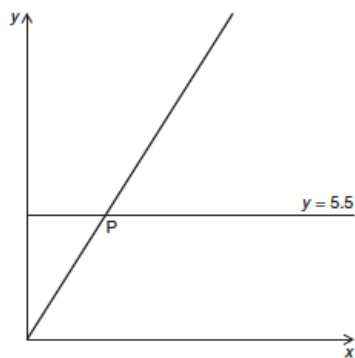
AP = 3.48 m, PQ = 5 m,
BC = 7.9 m

What is the scale factor of enlargement?

What is the length of AB?

Straight line

These points lie on the straight line below: (0, 0), (5, 7.9), (10, 15.8)



P is the point of intersection of this straight line with the line $y = 5.5$

What are the coordinates of P?

Currency

- Use $\text{£}1 = 1.58$ euros to work out how much 57p is in euros.
- Use 69.7 Indian rupees = $\text{£}1$ to work out how much 120 rupees is in pounds.
- Use $\text{£}1 = 1.58$ euros and $\text{£}1 = 69.7$ rupees to work out how much 1 euro is in rupees.